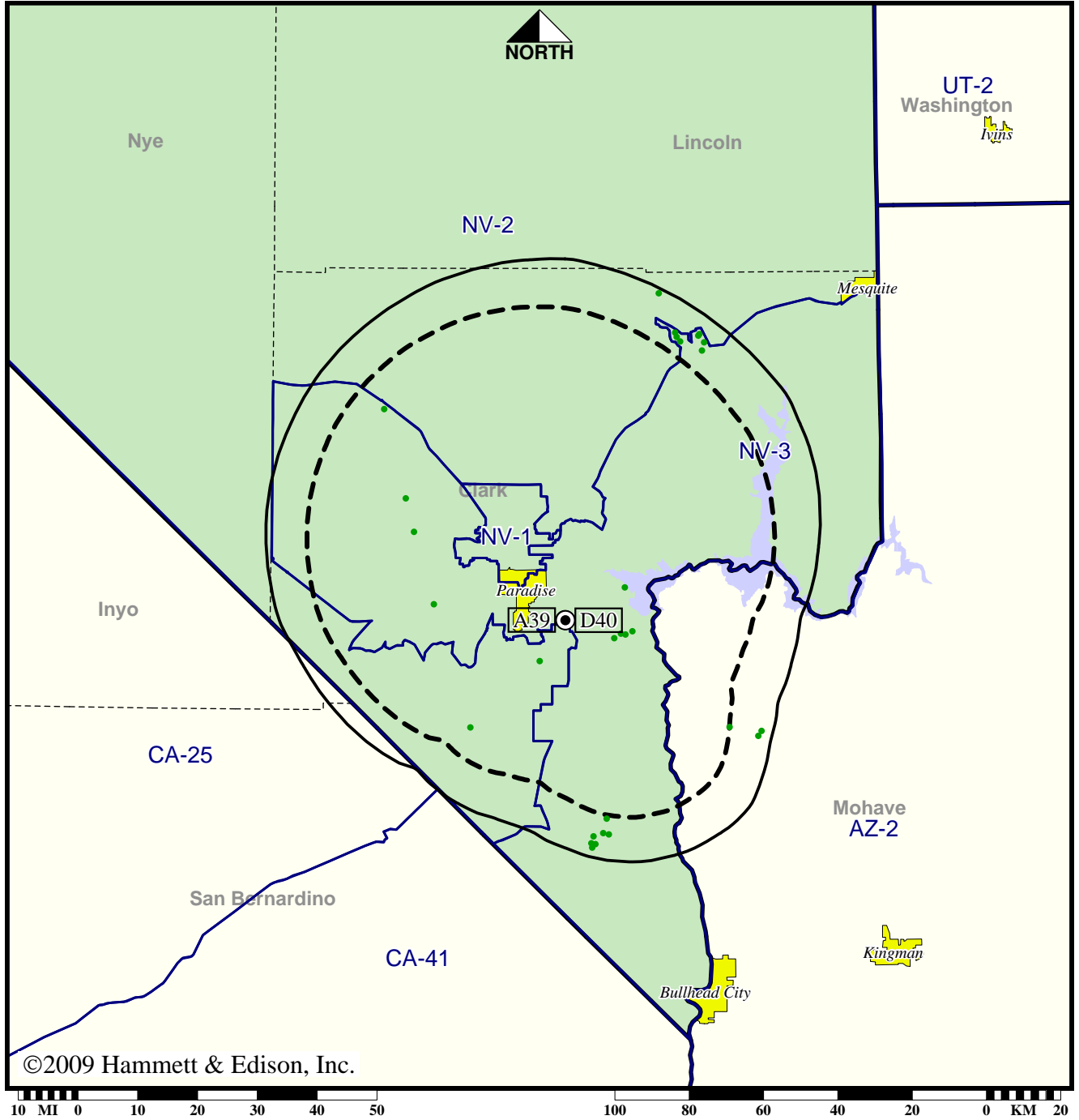


TV Station KBLR • Analog Channel 39, DTV Channel 40 • Paradise, NV

Expected Operation on June 13: Licensed

Digital License (solid): 230 kW ERP at 329 m HAAT  
 vs. Analog (dashed): 1320 kW ERP at 363 m HAAT

Market: Las Vegas, NV



©2009 Hammett & Edison, Inc.

● Coverage gained after DTV transition  
 No symbol = no change in coverage

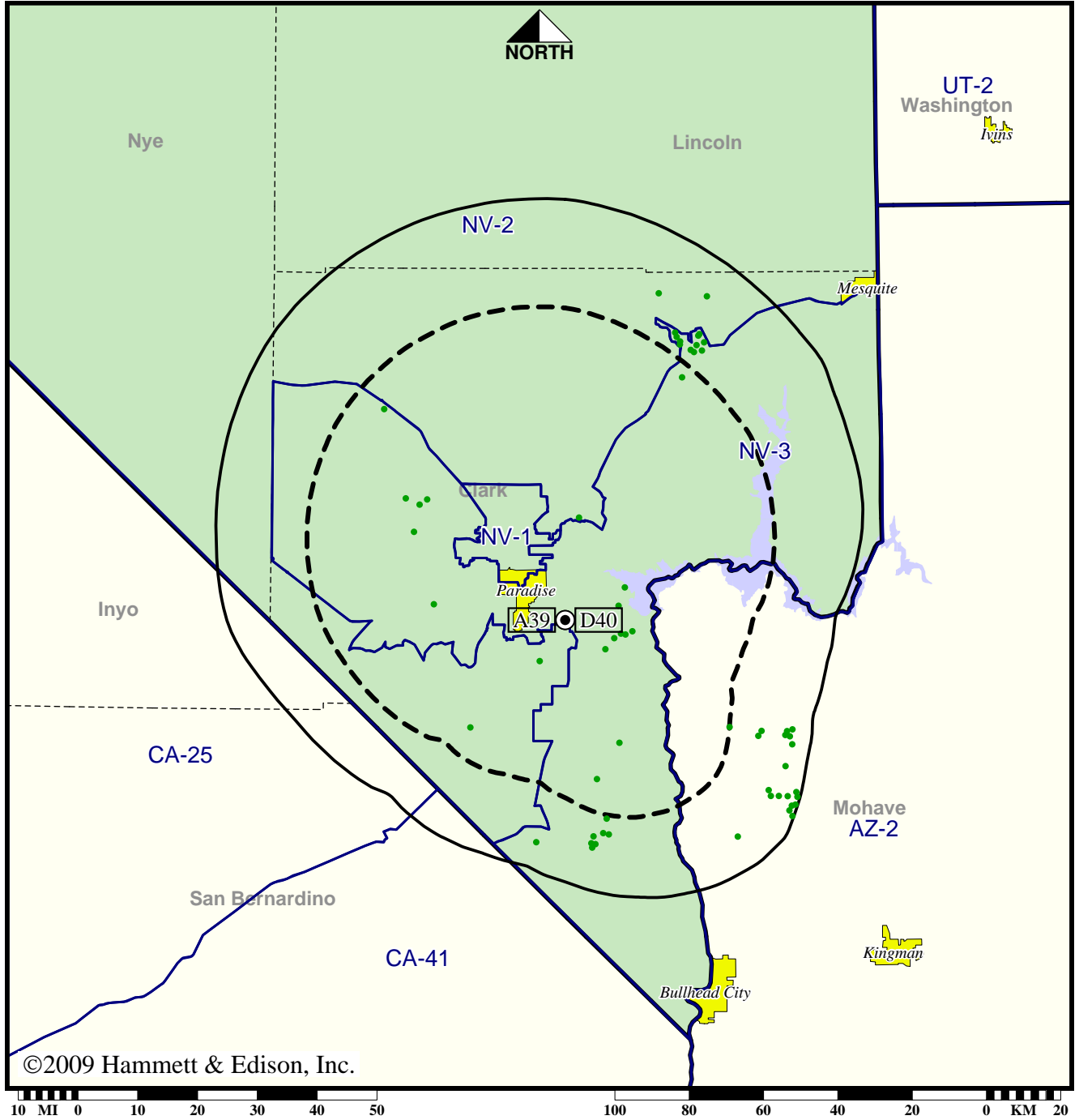
Analog service	1,332,691 persons
Digital service	1,343,188
Analog loss	0
Digital gain	10,497
Net gain	10,497

TV Station KBLR • Analog Channel 39, DTV Channel 40 • Paradise, NV

Approved Post-Transition Operation: Granted Construction Permit

Digital CP (solid): 1000 kW ERP at 363 m HAAT  
 vs. Analog (dashed): 1320 kW ERP at 363 m HAAT

Market: Las Vegas, NV



©2009 Hammett & Edison, Inc.

● Coverage gained after DTV transition  
 No symbol = no change in coverage

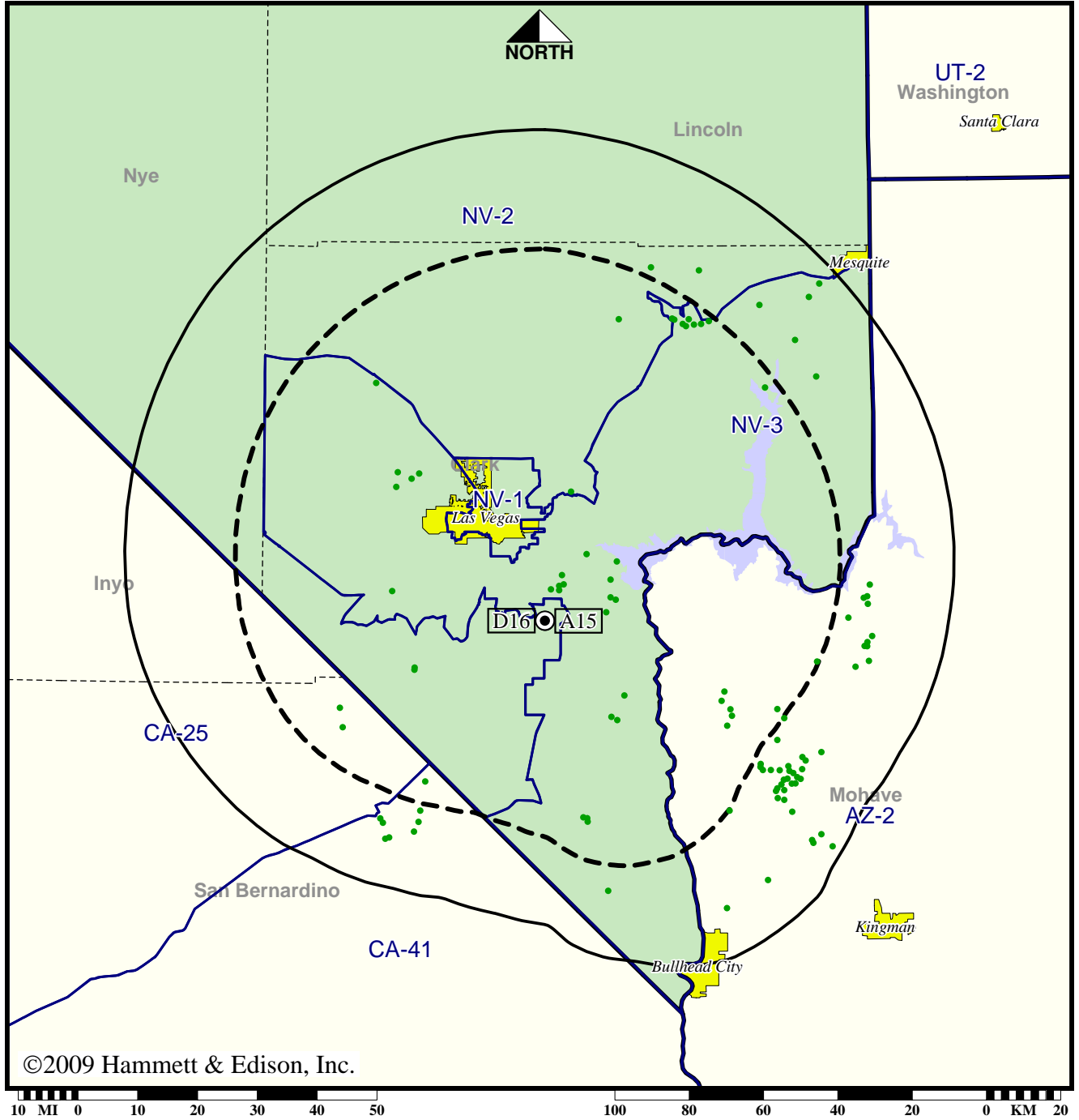
Analog service	1,332,691 persons
Digital service	1,344,785
Analog loss	0
Digital gain	12,094
Net gain	12,094

TV Station KINC • Analog Channel 15, DTV Channel 16 • Las Vegas, NV

Expected Operation on June 13: Licensed

Digital License (solid): 1000 kW ERP at 570 m HAAT  
 vs. Analog (dashed): 1120 kW ERP at 564 m HAAT

Market: Las Vegas, NV



©2009 Hammett & Edison, Inc.

● Coverage gained after DTV transition  
 No symbol = no change in coverage

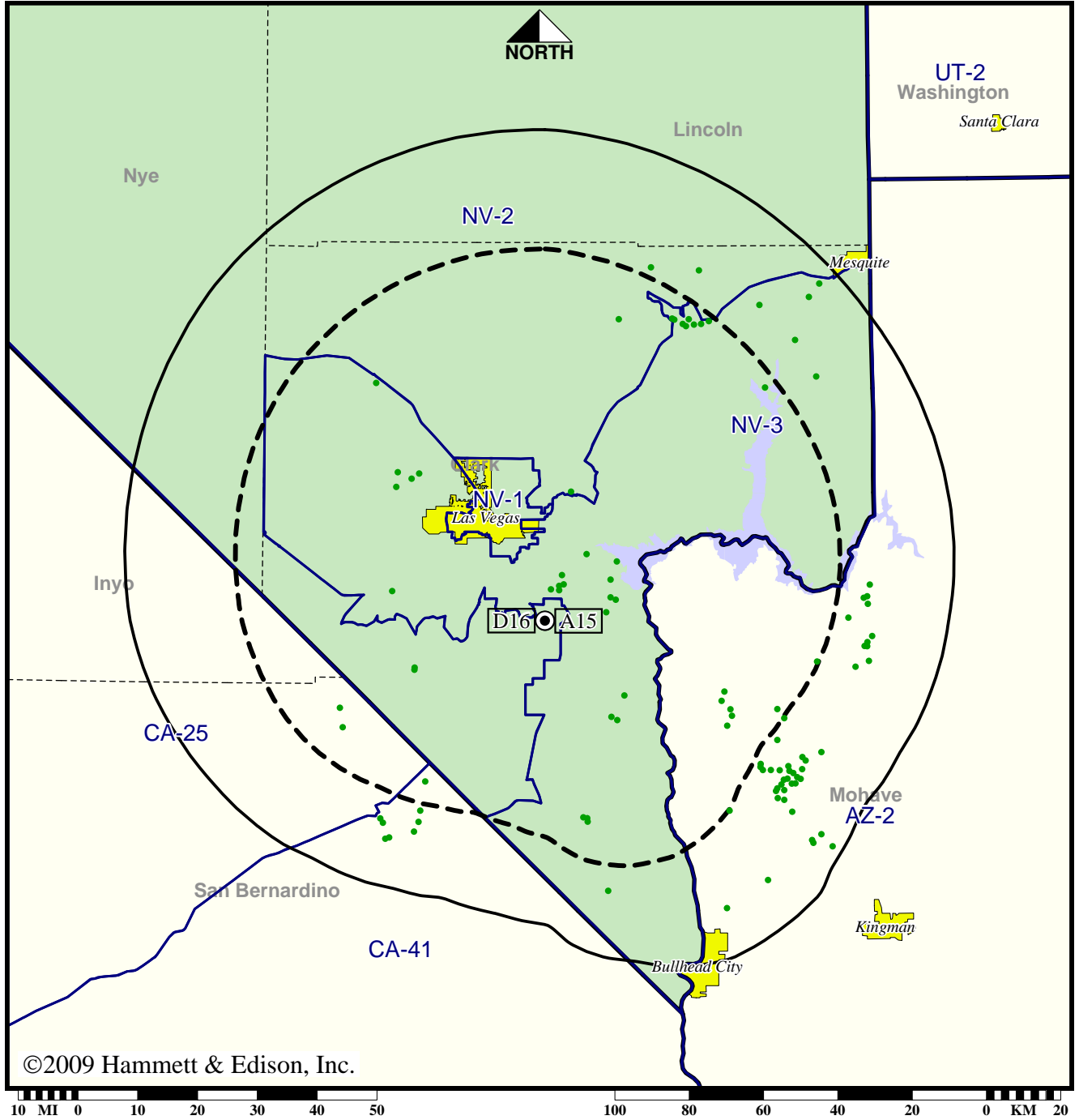
Analog service	1,327,259 persons
Digital service	1,349,138
Analog loss	0
Digital gain	21,879
Net gain	21,879

TV Station KINC • Analog Channel 15, DTV Channel 16 • Las Vegas, NV

Approved Post-Transition Operation: Licensed

Digital License (solid): 1000 kW ERP at 570 m HAAT  
 vs. Analog (dashed): 1120 kW ERP at 564 m HAAT

Market: Las Vegas, NV



©2009 Hammett & Edison, Inc.

● Coverage gained after DTV transition  
 No symbol = no change in coverage

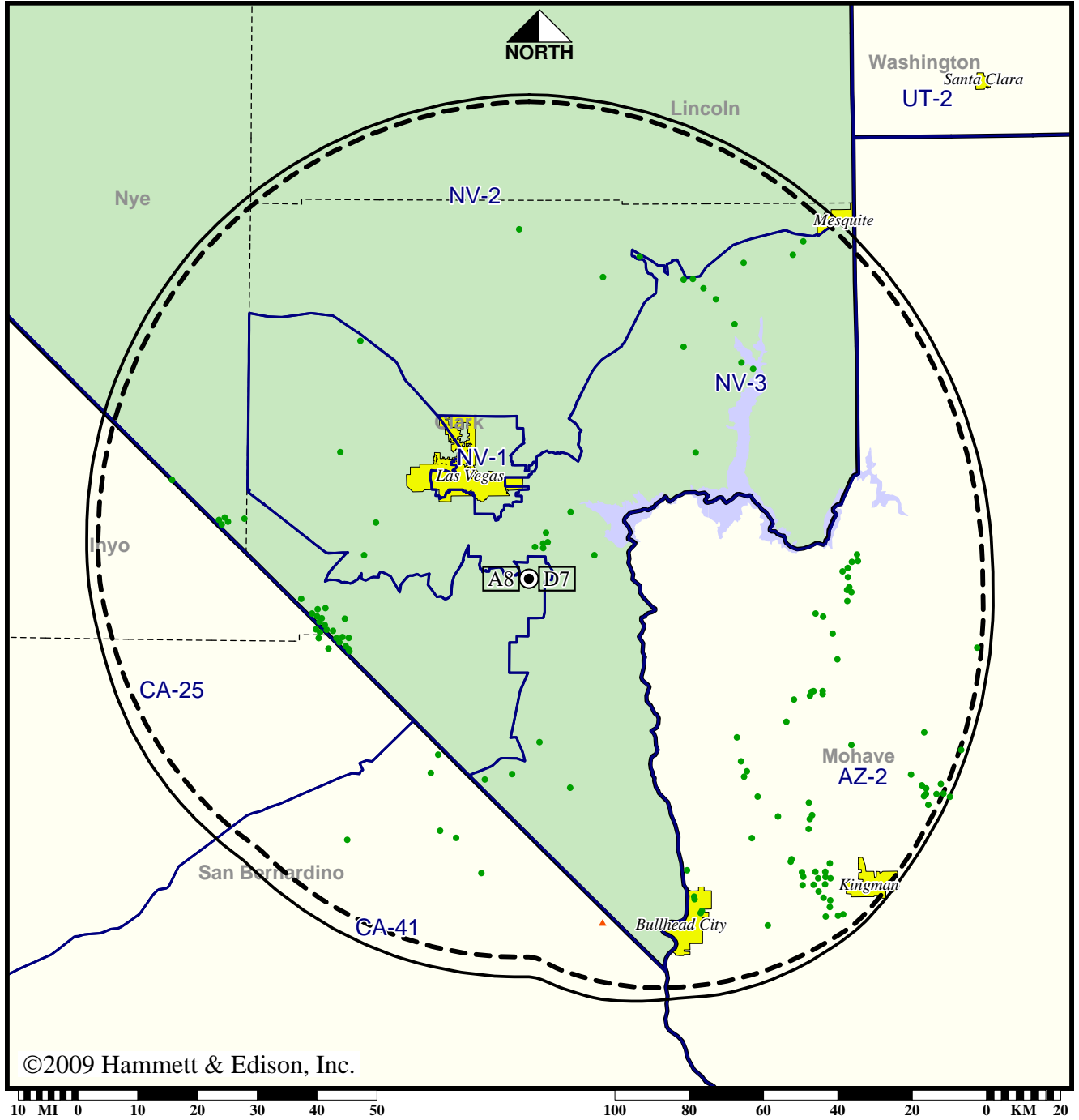
Analog service	1,327,259 persons
Digital service	1,349,138
Analog loss	0
Digital gain	21,879
Net gain	21,879

Station KLAS-TV • Analog Channel 8, DTV Channel 7 • Las Vegas, NV

Expected Operation on June 13: Licensed

Digital License (solid): 30.1 kW ERP at 609 m HAAT, Network: CBS  
 vs. Analog (dashed): 316 kW ERP at 609 m HAAT, Network: CBS

Market: Las Vegas, NV



©2009 Hammett & Edison, Inc.

- Coverage gained after DTV transition
- No symbol = no change in coverage
- ▲ Coverage lost after DTV transition

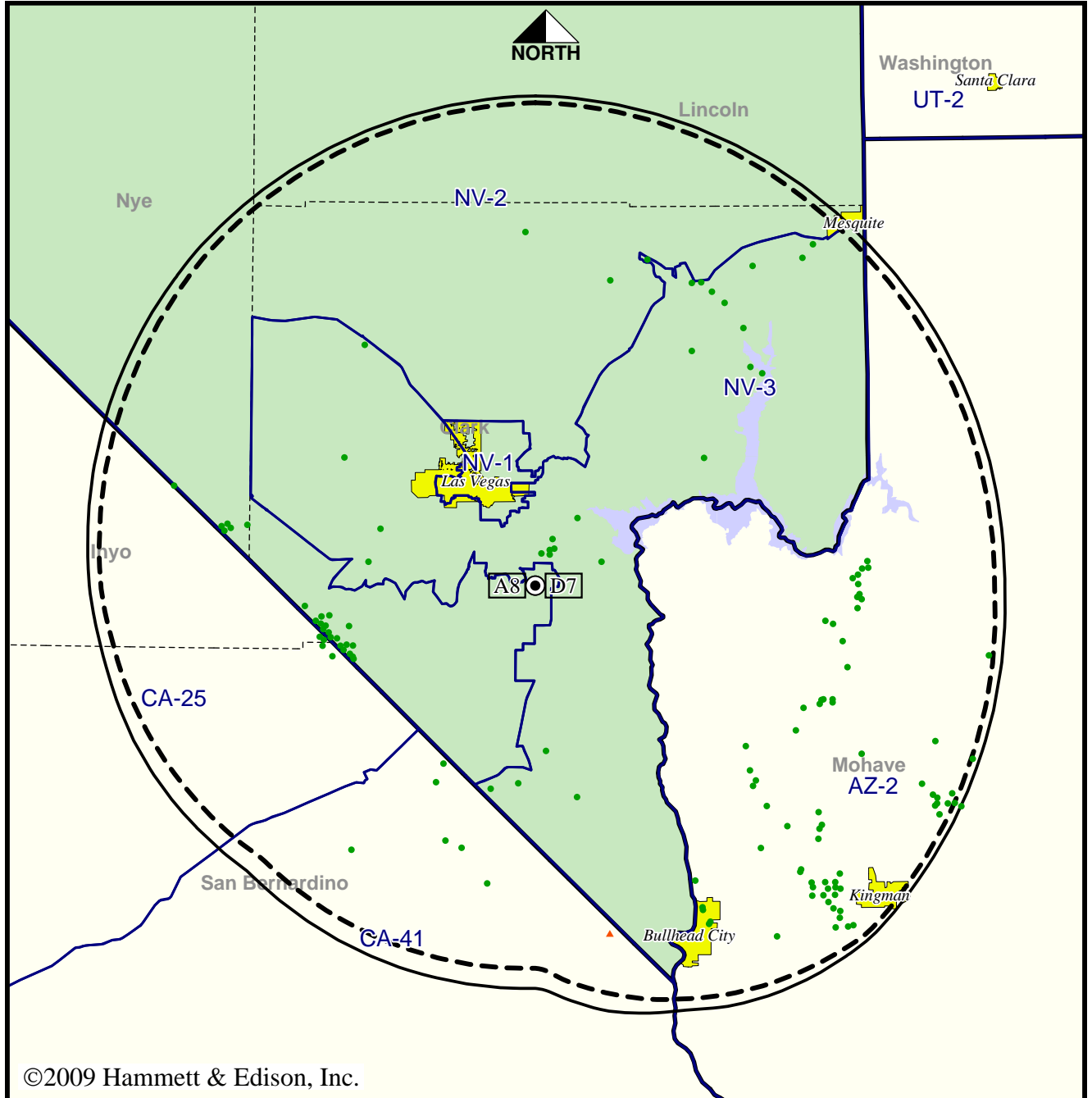
Analog service	1,336,205 persons
Digital service	1,362,788
Analog loss	2
Digital gain	26,585
Net gain	26,583

Station KLAS-TV • Analog Channel 8, DTV Channel 7 • Las Vegas, NV

Approved Post-Transition Operation: Licensed

Digital License (solid): 30.1 kW ERP at 609 m HAAT, Network: CBS  
 vs. Analog (dashed): 316 kW ERP at 609 m HAAT, Network: CBS

Market: Las Vegas, NV



©2009 Hammett & Edison, Inc.



- Coverage gained after DTV transition
- No symbol = no change in coverage
- ▲ Coverage lost after DTV transition

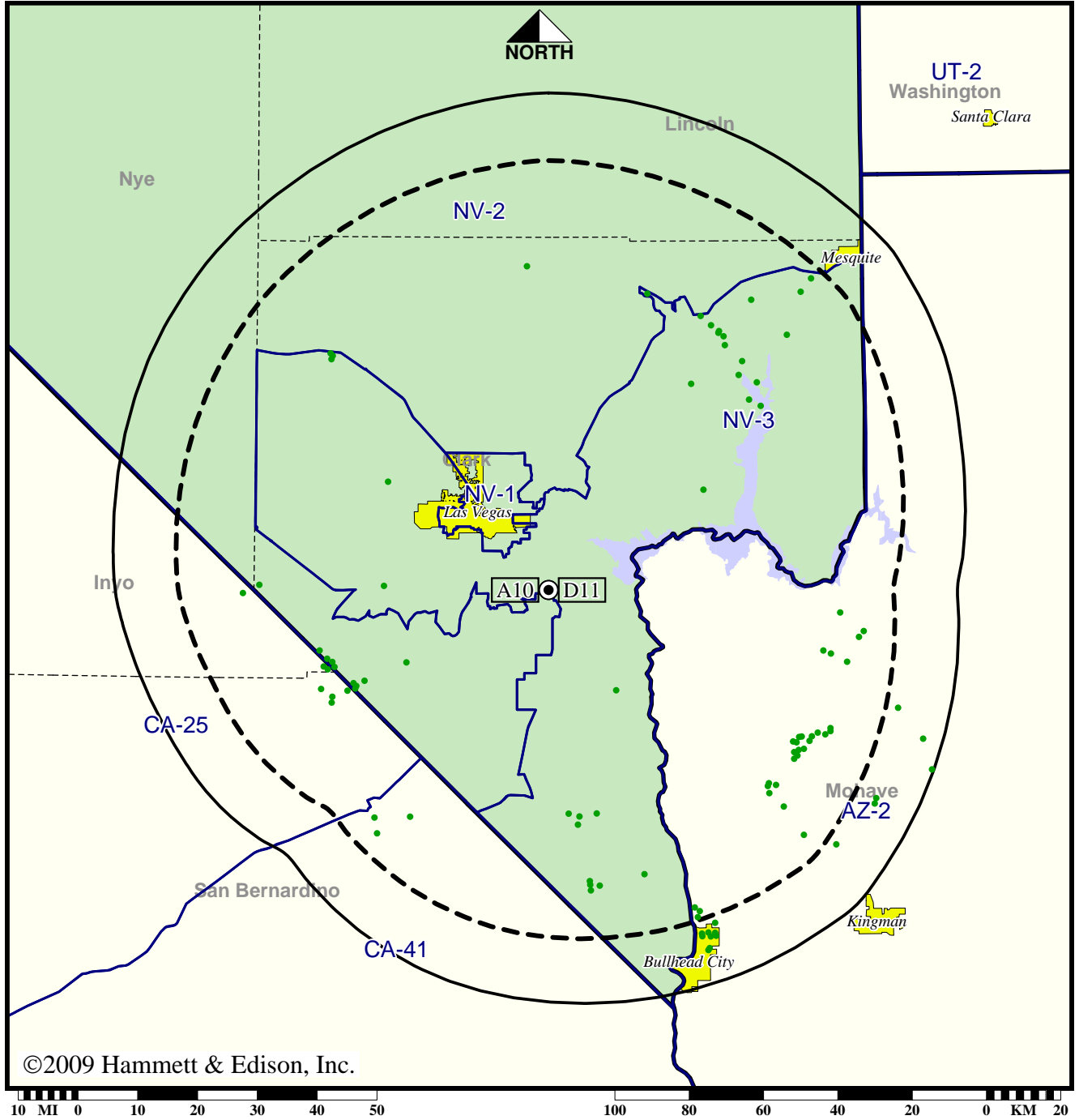
Analog service	1,336,205 persons
Digital service	1,362,788
Analog loss	2
Digital gain	26,585
Net gain	26,583

TV Station KLVX • Analog Channel 10, DTV Channel 11 • Las Vegas, NV

Expected Operation on June 13: Licensed

Digital License (solid): 105 kW ERP at 371 m HAAT, Network: PBS  
 vs. Analog (dashed): 295 kW ERP at 372 m HAAT, Network: PBS

Market: Las Vegas, NV



©2009 Hammett & Edison, Inc.

● Coverage gained after DTV transition  
 No symbol = no change in coverage

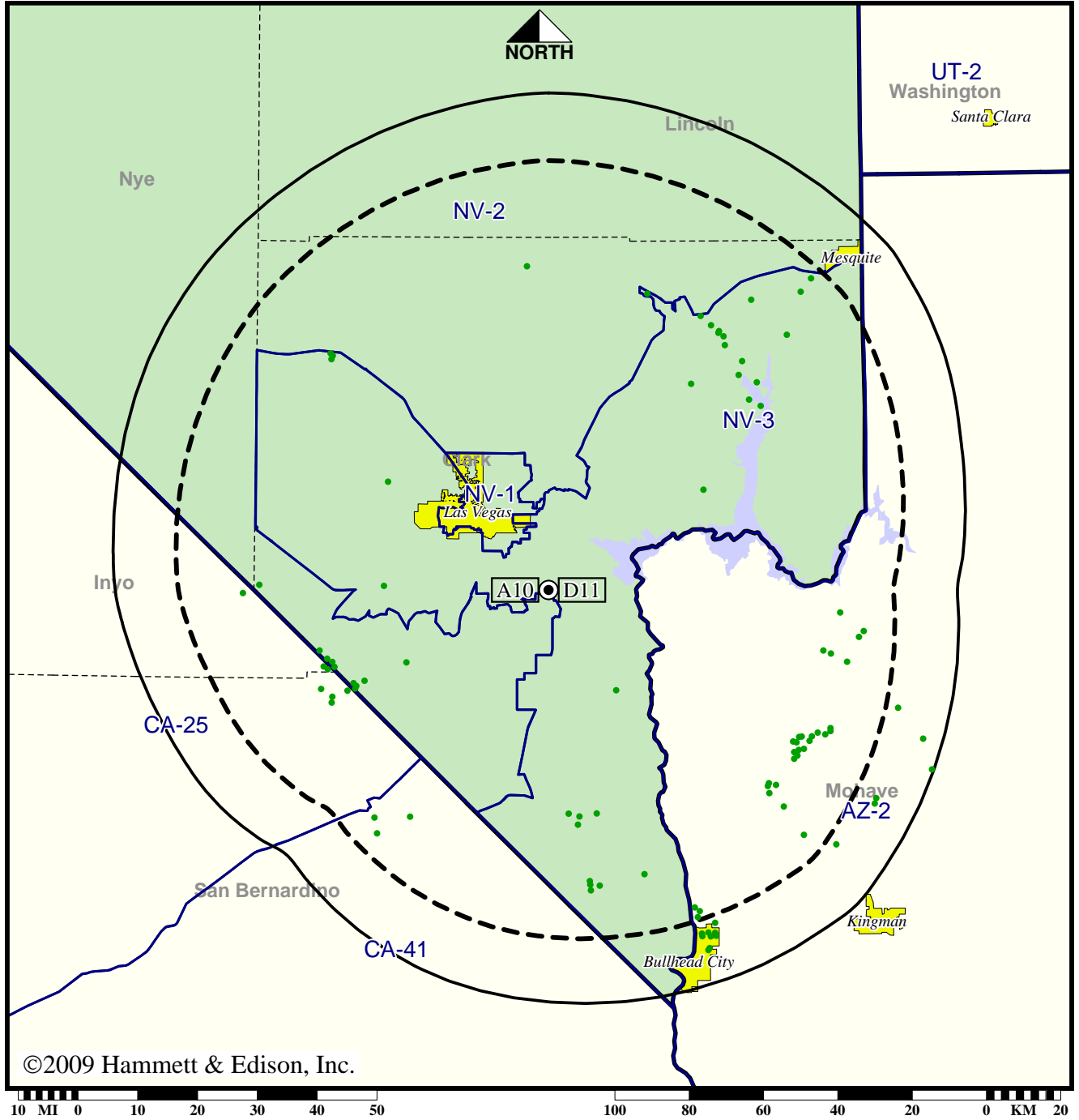
Analog service	1,348,176 persons
Digital service	1,359,033
Analog loss	0
Digital gain	10,857
Net gain	10,857

TV Station KLVX • Analog Channel 10, DTV Channel 11 • Las Vegas, NV

Approved Post-Transition Operation: Licensed

Digital License (solid): 105 kW ERP at 371 m HAAT, Network: PBS  
 vs. Analog (dashed): 295 kW ERP at 372 m HAAT, Network: PBS

Market: Las Vegas, NV



©2009 Hammett & Edison, Inc.

● Coverage gained after DTV transition  
 No symbol = no change in coverage

Analog service	1,348,176 persons
Digital service	1,359,033
Analog loss	0
Digital gain	10,857
Net gain	10,857

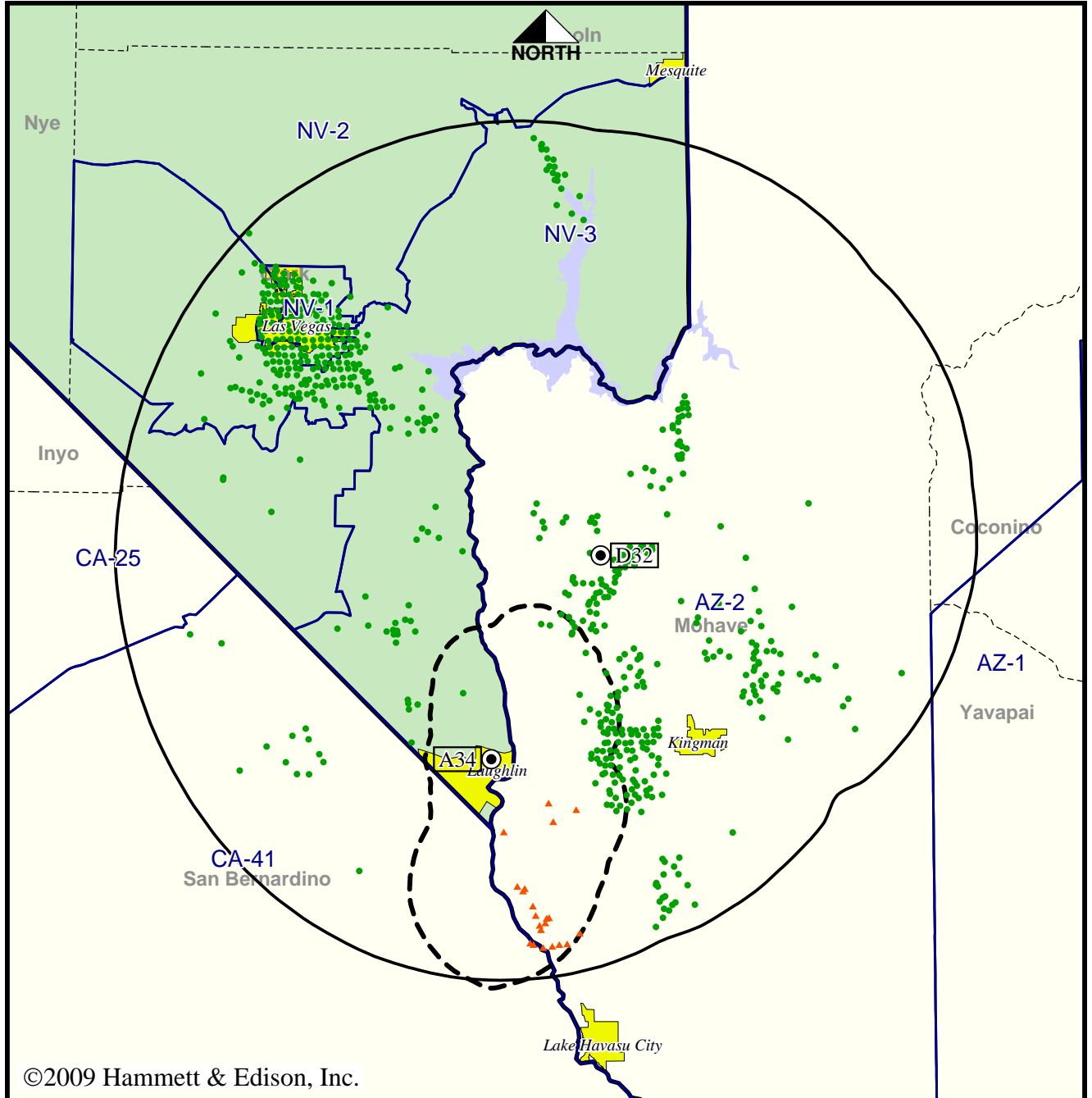


TV Station KMCC • Analog Channel 34, DTV Channel 32 • Laughlin, NV

Expected Operation on June 13: Granted Construction Permit

Digital CP (solid): 1000 kW ERP at 607 m HAAT  
 vs. Analog (dashed): 416 kW ERP at -63 m HAAT

Market: Las Vegas, NV



©2009 Hammett & Edison, Inc.

- Coverage gained after DTV transition
- No symbol = no change in coverage
- ▲ Coverage lost after DTV transition

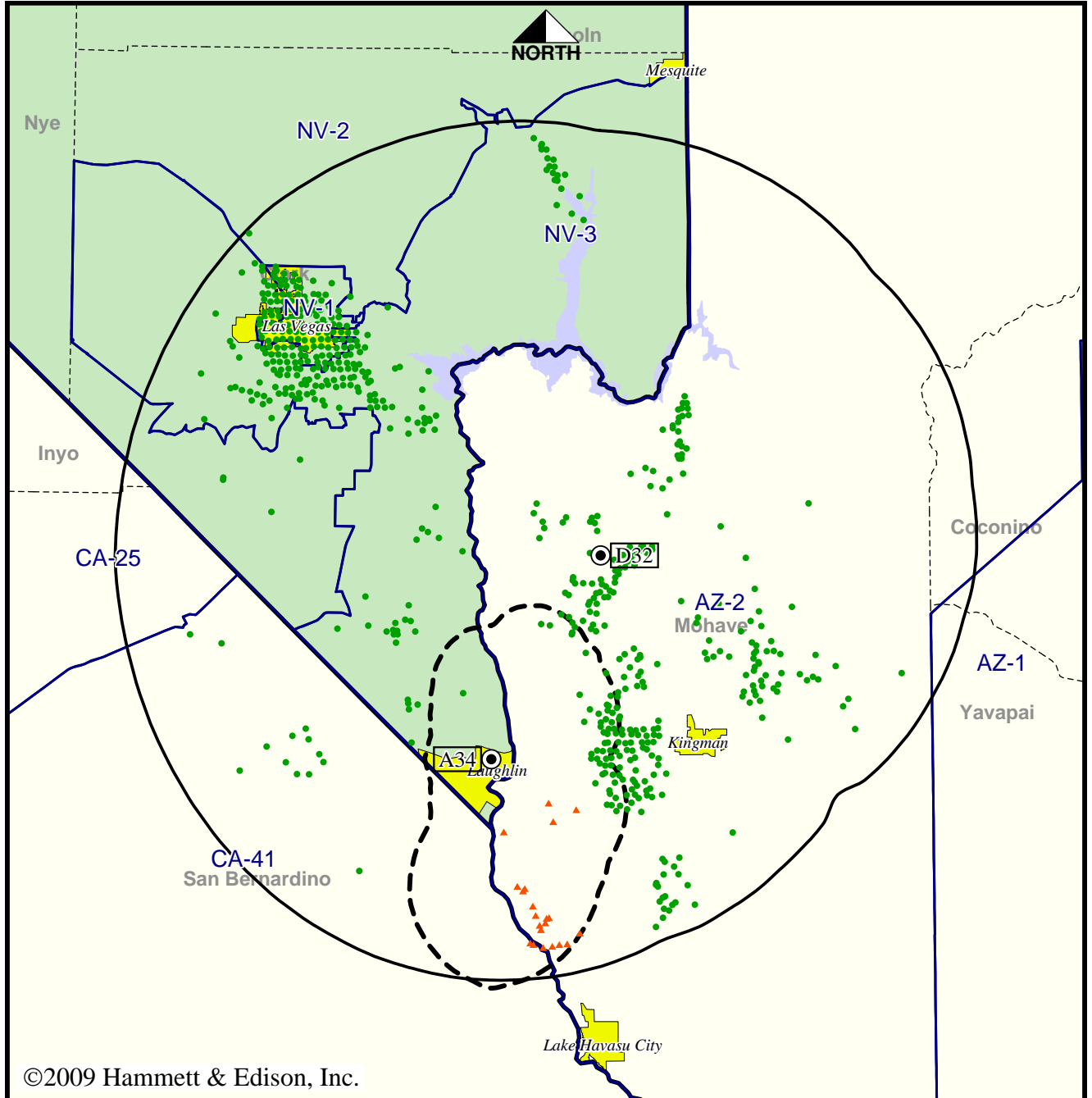
Analog service	63,163 persons
Digital service	1,267,235
Analog loss	3,237
Digital gain	1,207,309
Net gain	1,204,072

TV Station KMCC • Analog Channel 34, DTV Channel 32 • Laughlin, NV

Approved Post-Transition Operation: Granted Construction Permit

Digital CP (solid): 1000 kW ERP at 607 m HAAT  
 vs. Analog (dashed): 416 kW ERP at -63 m HAAT

Market: Las Vegas, NV



©2009 Hammett & Edison, Inc.

- Coverage gained after DTV transition
- No symbol = no change in coverage
- ▲ Coverage lost after DTV transition

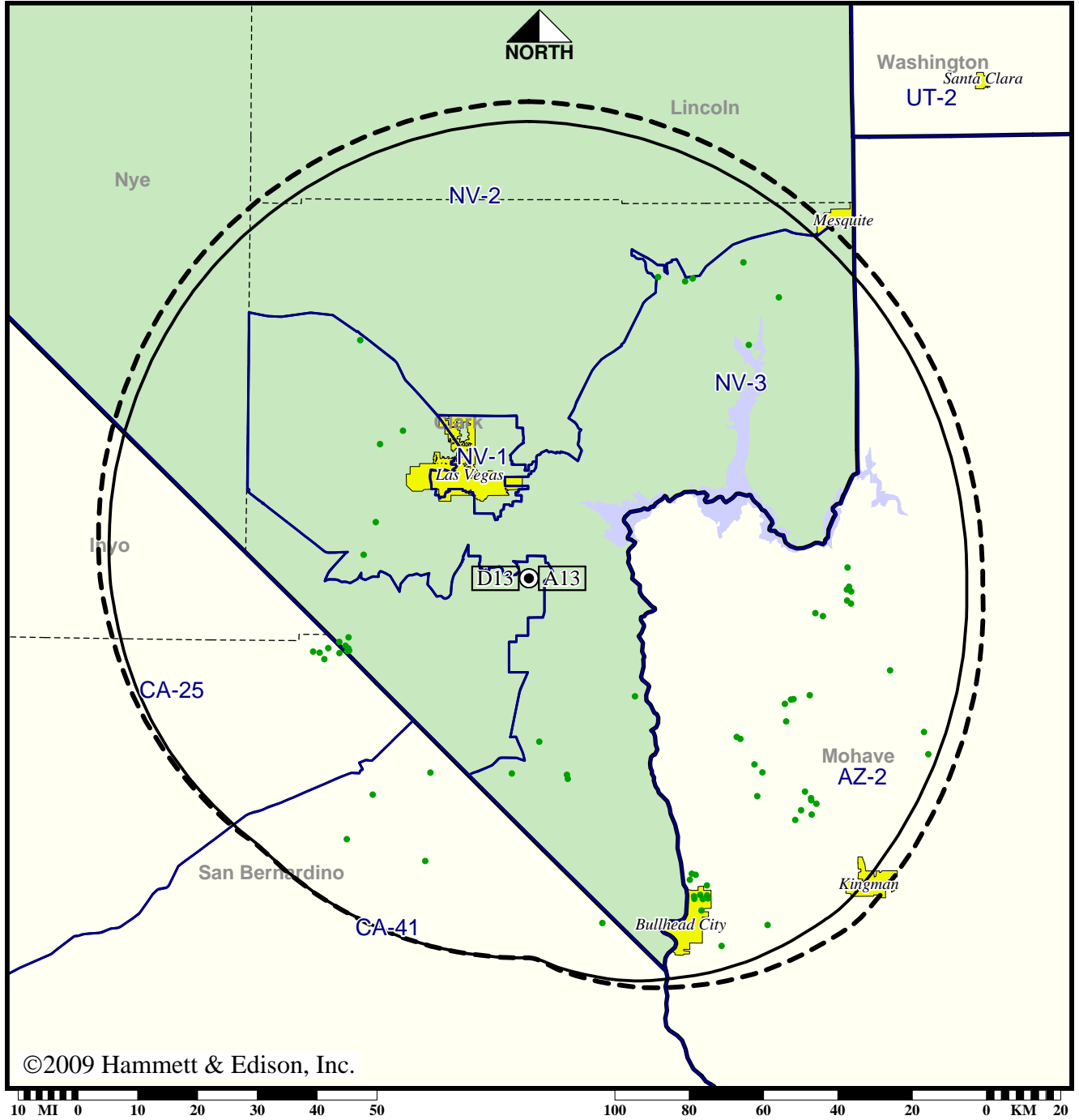
Analog service	63,163 persons
Digital service	1,267,235
Analog loss	3,237
Digital gain	1,207,309
Net gain	1,204,072

TV Station KTNV • Analog Channel 13, DTV Channel 13 • Las Vegas, NV

Expected Operation on June 13: Granted Construction Permit

Digital CP (solid): 16.0 kW ERP at 606 m HAAT, Network: ABC  
 vs. Analog (dashed): 316 kW ERP at 606 m HAAT, Network: ABC

Market: Las Vegas, NV



©2009 Hammett & Edison, Inc.

● Coverage gained after DTV transition  
 No symbol = no change in coverage

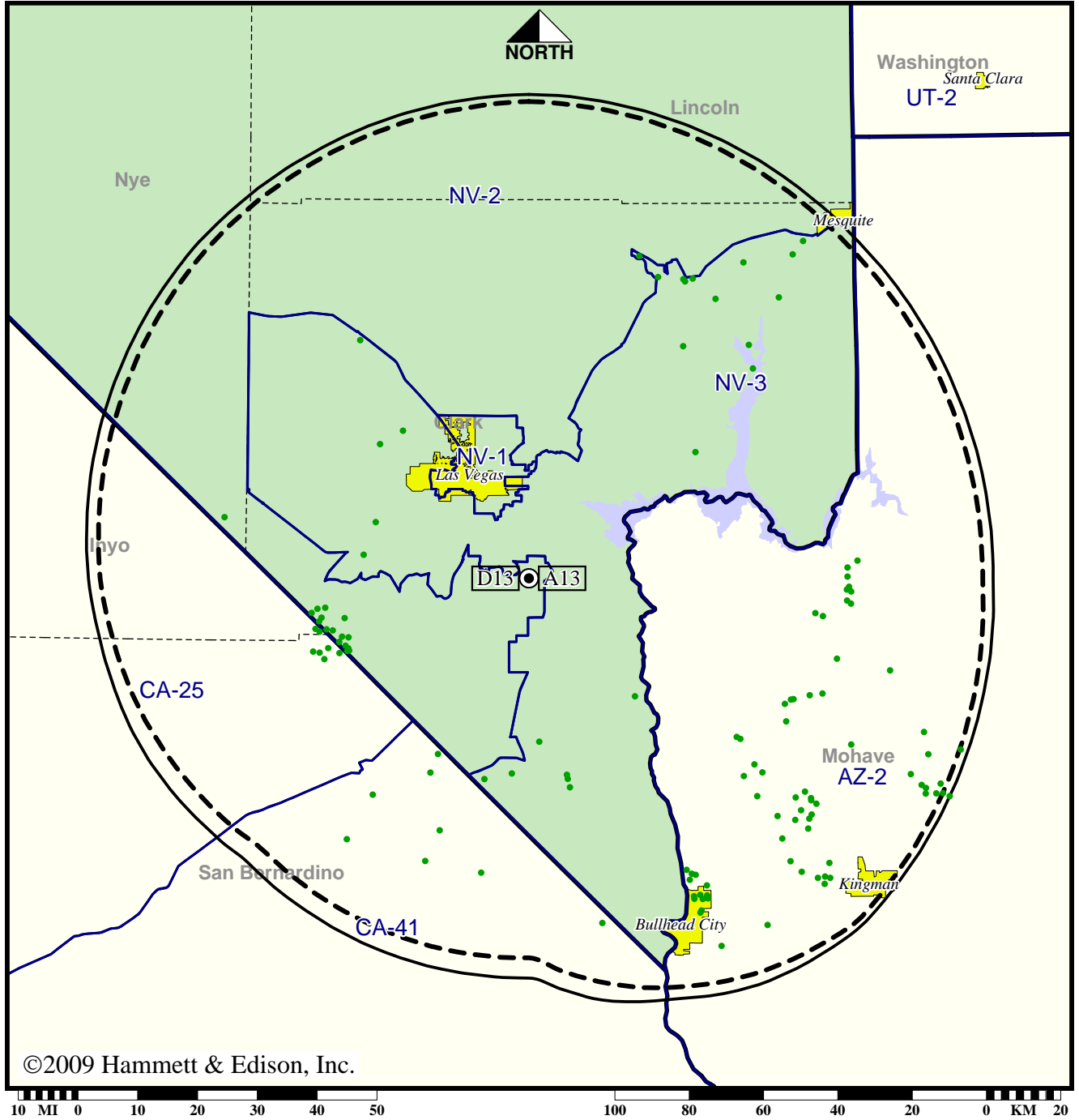
Analog service	1,348,003 persons
Digital service	1,354,580
Analog loss	0
Digital gain	6,577
Net gain	6,577

TV Station KTNV • Analog Channel 13, DTV Channel 13 • Las Vegas, NV

Approved Post-Transition Operation: Granted Construction Permit

Digital CP (solid): 30.5 kW ERP at 606 m HAAT, Network: ABC  
 vs. Analog (dashed): 316 kW ERP at 606 m HAAT, Network: ABC

Market: Las Vegas, NV



©2009 Hammett & Edison, Inc.

● Coverage gained after DTV transition  
 No symbol = no change in coverage

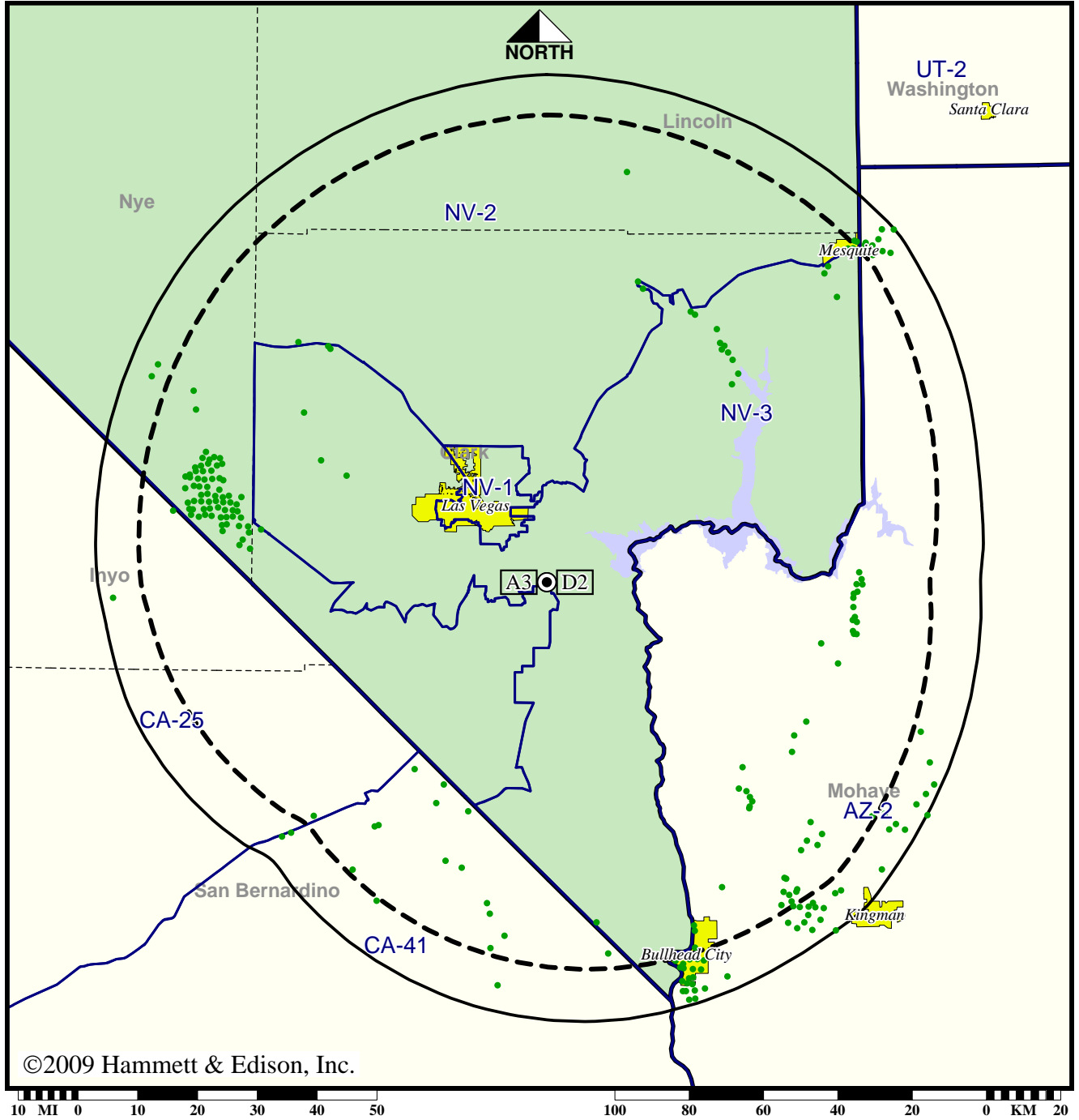
Analog service	1,348,003 persons
Digital service	1,359,630
Analog loss	0
Digital gain	11,627
Net gain	11,627

TV Station KVBC • Analog Channel 3, DTV Channel 2 • Las Vegas, NV

Expected Operation on June 13: Licensed

Digital License (solid): 27.7 kW ERP at 386 m HAAT, Network: NBC  
 vs. Analog (dashed): 100 kW ERP at 385 m HAAT, Network: NBC

Market: Las Vegas, NV



©2009 Hammett & Edison, Inc.

● Coverage gained after DTV transition  
 No symbol = no change in coverage

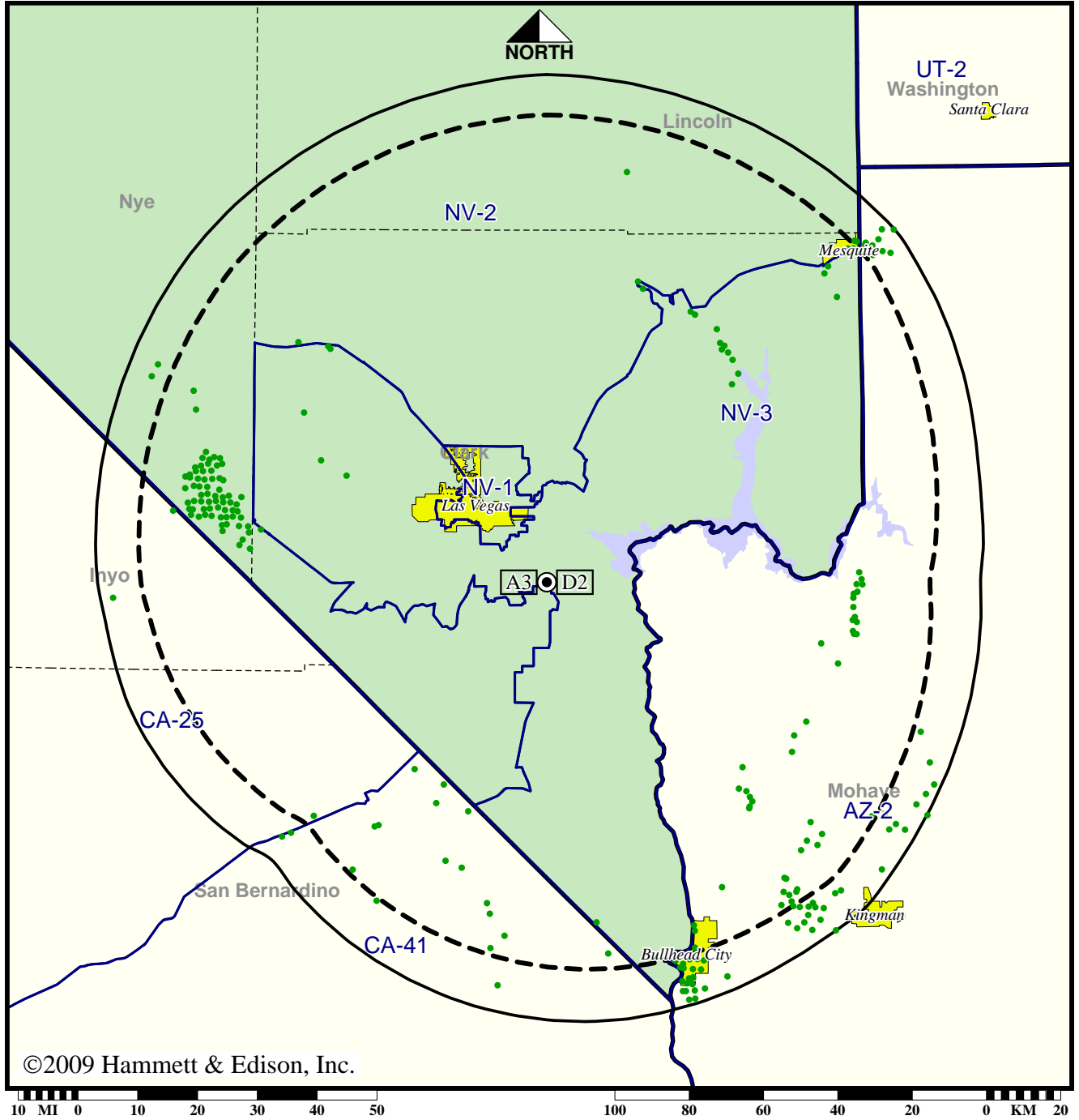
Analog service	1,364,277 persons
Digital service	1,422,350
Analog loss	0
Digital gain	58,073
Net gain	58,073

TV Station KVBC • Analog Channel 3, DTV Channel 2 • Las Vegas, NV

Approved Post-Transition Operation: Licensed

Digital License (solid): 27.7 kW ERP at 386 m HAAT, Network: NBC  
 vs. Analog (dashed): 100 kW ERP at 385 m HAAT, Network: NBC

Market: Las Vegas, NV



©2009 Hammett & Edison, Inc.

● Coverage gained after DTV transition  
 No symbol = no change in coverage

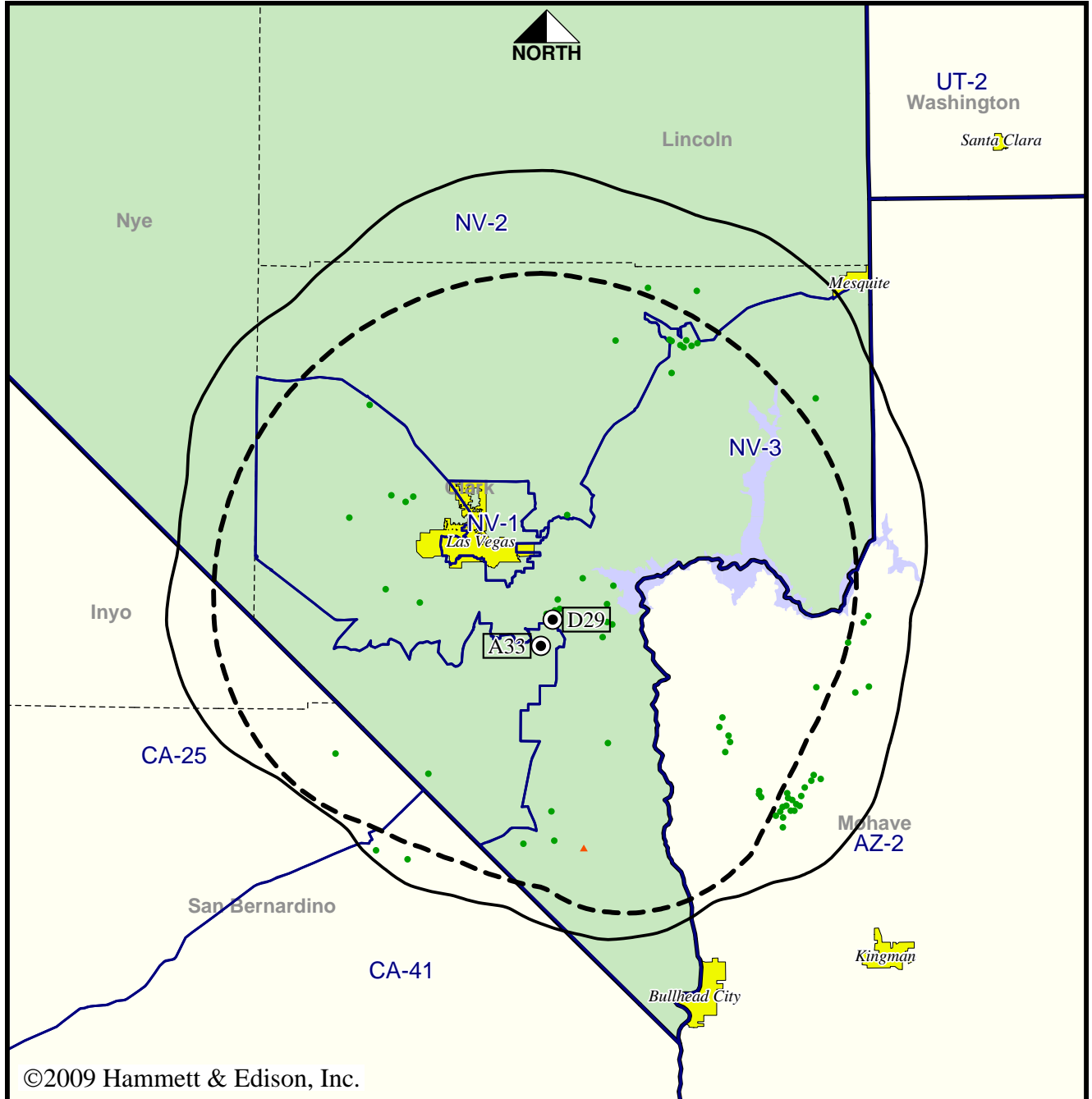
Analog service	1,364,277 persons
Digital service	1,422,350
Analog loss	0
Digital gain	58,073
Net gain	58,073

TV Station KVCW • Analog Channel 33, DTV Channel 29 • Las Vegas, NV

Expected Operation on June 13: Licensed

Digital License (solid): 1000 kW ERP at 383 m HAAT  
 vs. Analog (dashed): 1350 kW ERP at 581 m HAAT

Market: Las Vegas, NV



©2009 Hammett & Edison, Inc.

- Coverage gained after DTV transition
- No symbol = no change in coverage
- ▲ Coverage lost after DTV transition

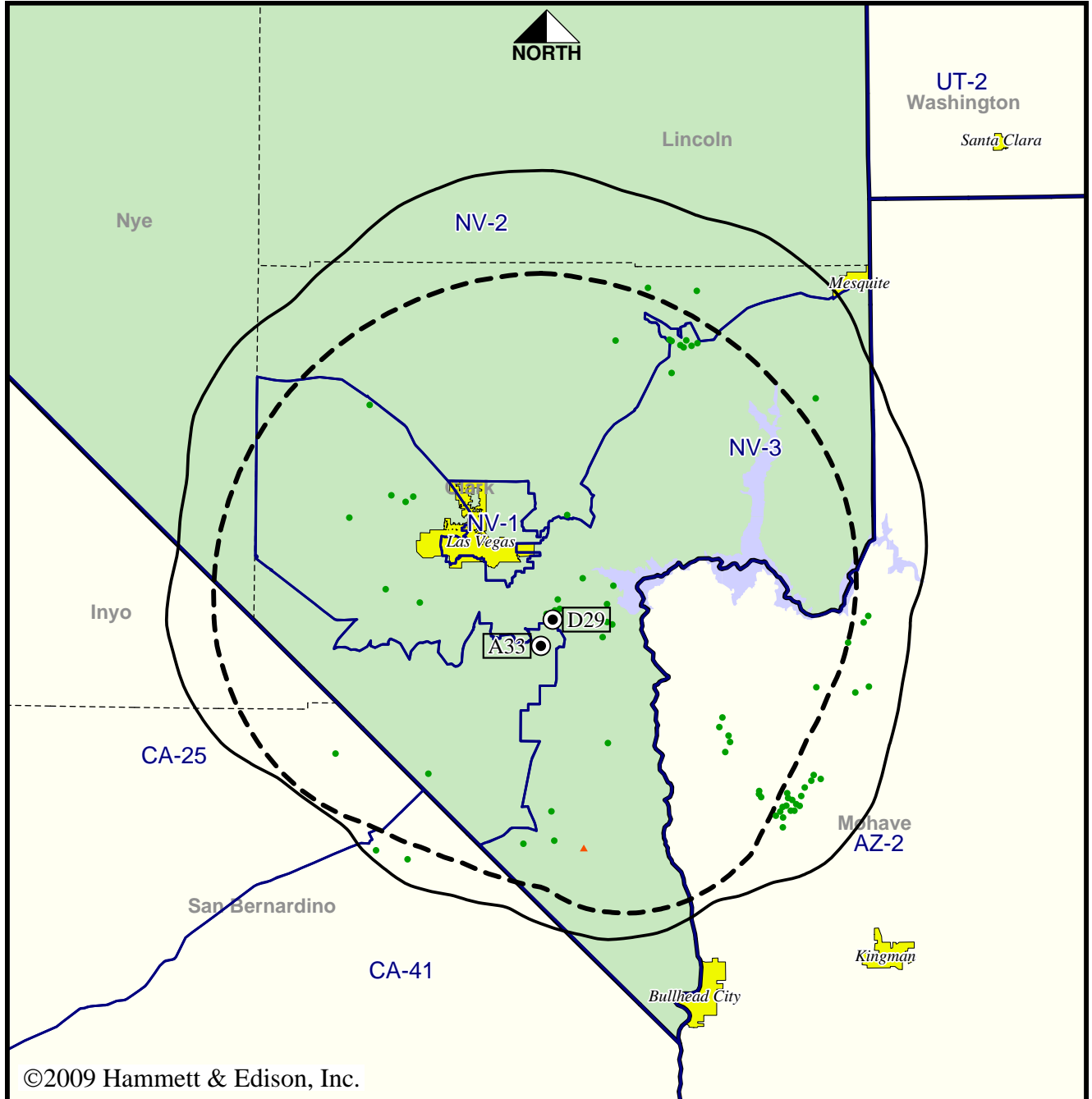
Analog service	1,327,345 persons
Digital service	1,348,276
Analog loss	352
Digital gain	21,283
Net gain	20,931

TV Station KVCW • Analog Channel 33, DTV Channel 29 • Las Vegas, NV

Approved Post-Transition Operation: Licensed

Digital License (solid): 1000 kW ERP at 383 m HAAT  
 vs. Analog (dashed): 1350 kW ERP at 581 m HAAT

Market: Las Vegas, NV



©2009 Hammett & Edison, Inc.

- Coverage gained after DTV transition
- No symbol = no change in coverage
- ▲ Coverage lost after DTV transition

Analog service	1,327,345 persons
Digital service	1,348,276
Analog loss	352
Digital gain	21,283
Net gain	20,931

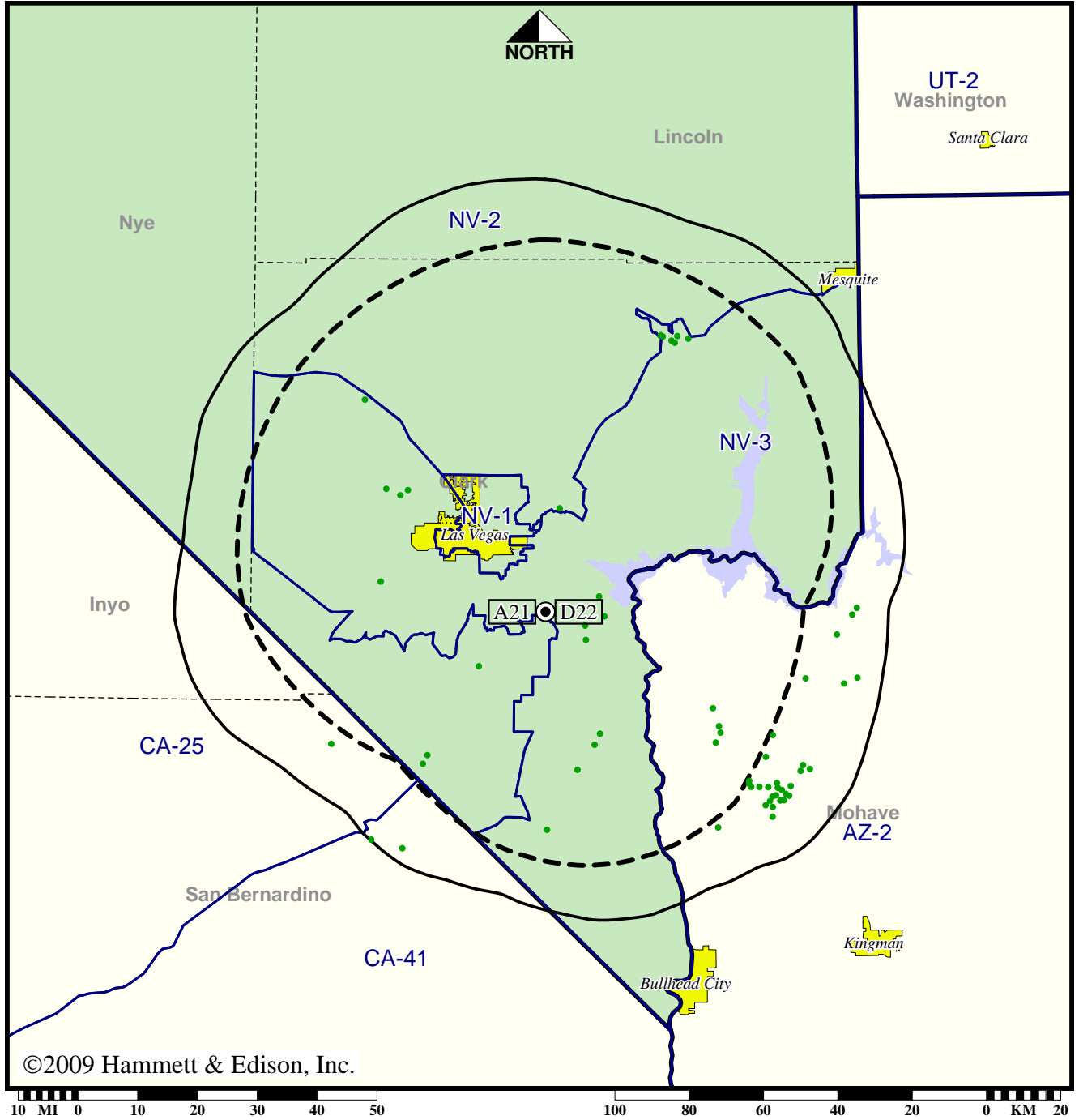


TV Station KVMY • Analog Channel 21, DTV Channel 22 • Las Vegas, NV

Expected Operation on June 13: Licensed

Digital License (solid): 630 kW ERP at 383 m HAAT  
 vs. Analog (dashed): 2570 kW ERP at 368 m HAAT

Market: Las Vegas, NV



©2009 Hammett & Edison, Inc.

● Coverage gained after DTV transition  
 No symbol = no change in coverage

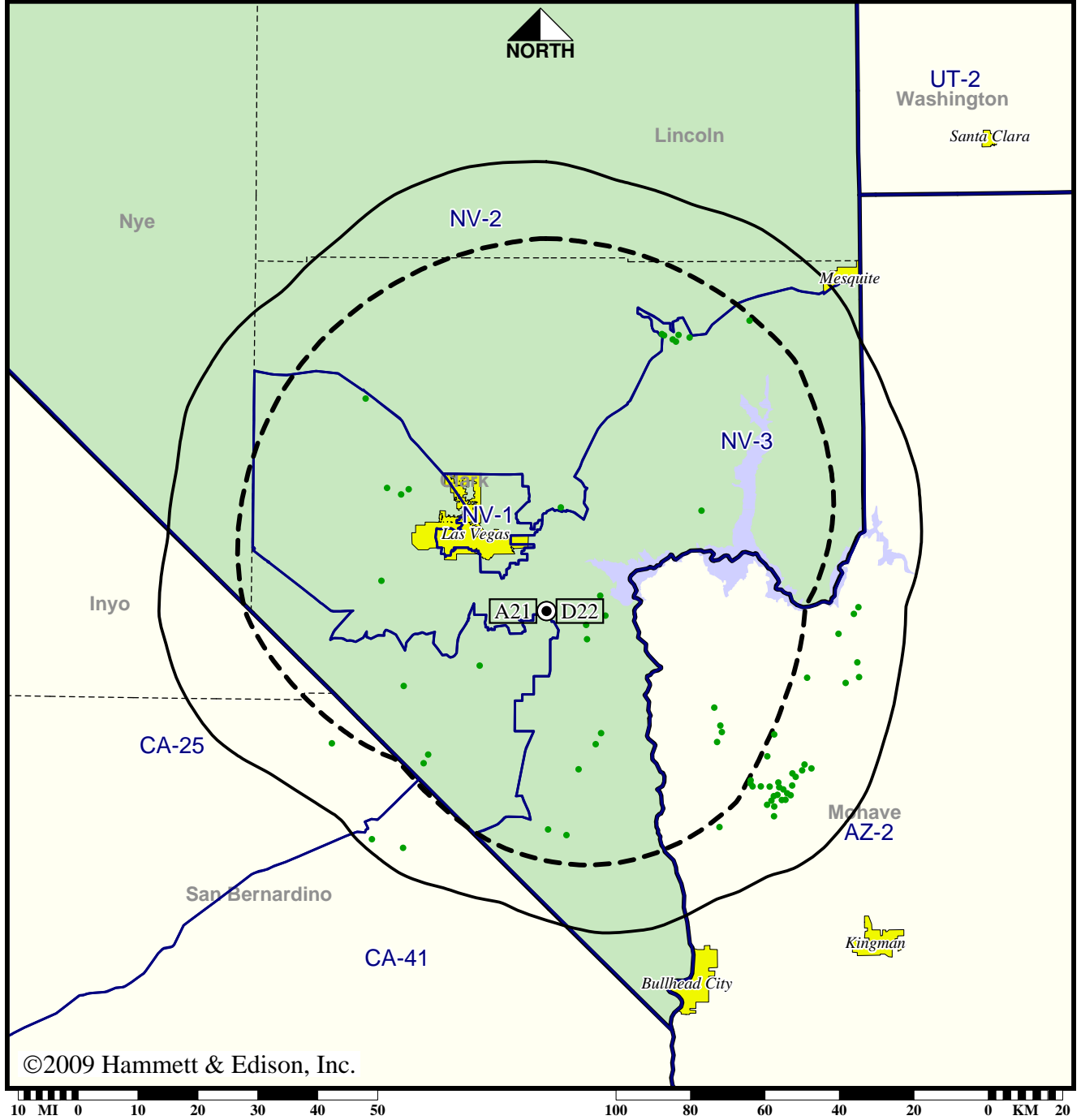
Analog service	1,341,395 persons
Digital service	1,348,222
Analog loss	0
Digital gain	6,827
Net gain	6,827

TV Station KVMY • Analog Channel 21, DTV Channel 22 • Las Vegas, NV

Approved Post-Transition Operation: Granted Construction Permit

Digital CP (solid): 1000 kW ERP at 383 m HAAT  
 vs. Analog (dashed): 2570 kW ERP at 368 m HAAT

Market: Las Vegas, NV



©2009 Hammett & Edison, Inc.

● Coverage gained after DTV transition  
 No symbol = no change in coverage

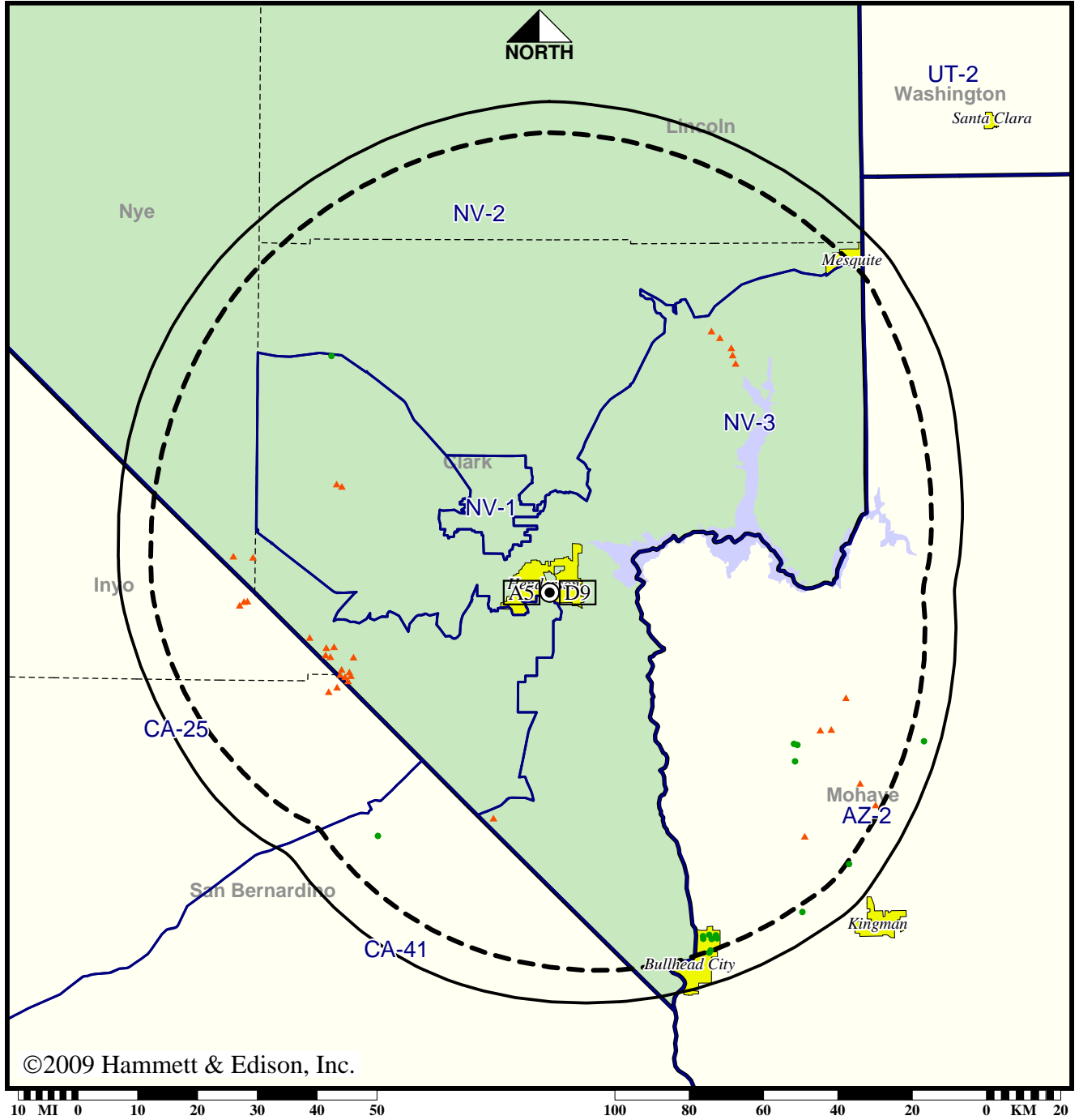
Analog service	1,341,395 persons
Digital service	1,348,701
Analog loss	0
Digital gain	7,306
Net gain	7,306

Station KVVU-TV • Analog Channel 5, DTV Channel 9 • Henderson, NV

Expected Operation on June 13: Licensed

Digital License (solid): 86.0 kW ERP at 384 m HAAT, Network: Fox  
 vs. Analog (dashed): 100 kW ERP at 362 m HAAT, Network: Fox

Market: Las Vegas, NV



©2009 Hammett & Edison, Inc.

- Coverage gained after DTV transition
- No symbol = no change in coverage
- ▲ Coverage lost after DTV transition

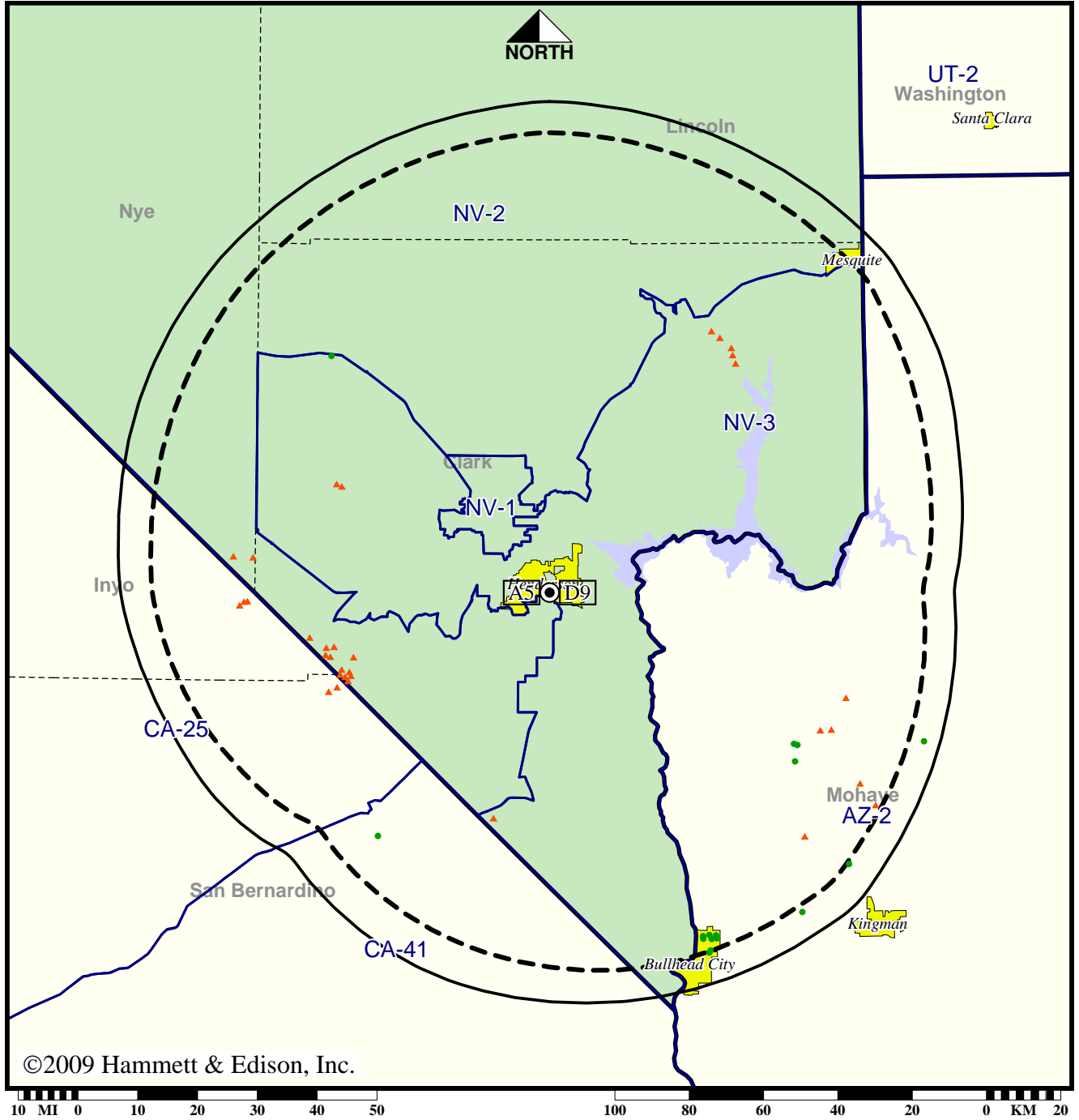
Analog service	1,356,402 persons
Digital service	1,359,098
Analog loss	2,093
Digital gain	4,789
Net gain	2,696

Station KVVU-TV • Analog Channel 5, DTV Channel 9 • Henderson, NV

Approved Post-Transition Operation: Licensed

Digital License (solid): 86.0 kW ERP at 384 m HAAT, Network: Fox  
 vs. Analog (dashed): 100 kW ERP at 362 m HAAT, Network: Fox

Market: Las Vegas, NV



©2009 Hammett & Edison, Inc.

- Coverage gained after DTV transition
- No symbol = no change in coverage
- ▲ Coverage lost after DTV transition

Analog service	1,356,402 persons
Digital service	1,359,098
Analog loss	2,093
Digital gain	4,789
Net gain	2,696