

Instructions for Looking Up 2020 Census Tracts

Updated 8/9/2022

The Census FactFinder was discontinued in March 2020. This document will walk you through how to look up the map for a particular census tract (or other geography), and it will provide instructions for downloading shapefiles for the tracts in a given county. If you want to match up addresses to a census tract use the Census Tract Geocoder with instructions here.

https://transition.fcc.gov/form477/Geo/more_about_2020_census_geocoder.pdf.

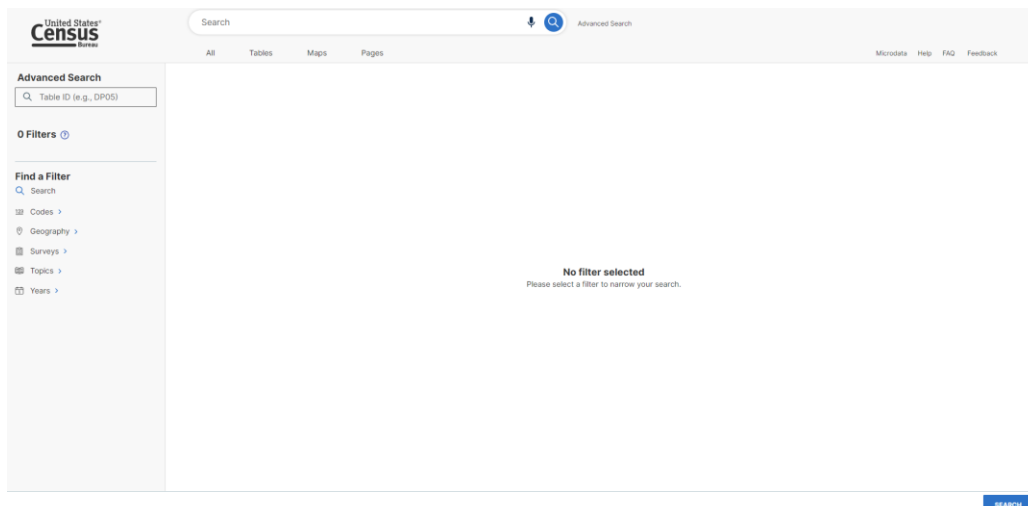
Note: As of December 2021, the FCC is using 2020 geographies for data reporting purposes. Make sure that geographies used for reporting are as defined by the 2020 Census, unless otherwise specified or superseded by new requirements.

I. Finding a map of a particular tract. Note that this method does not provide shapefiles for given tracts. To obtain shapefiles, see the second set of instructions further down in the document on **Page 5**.

1. Go to <https://data.census.gov/cedsci/> and click on **Advanced Search**.



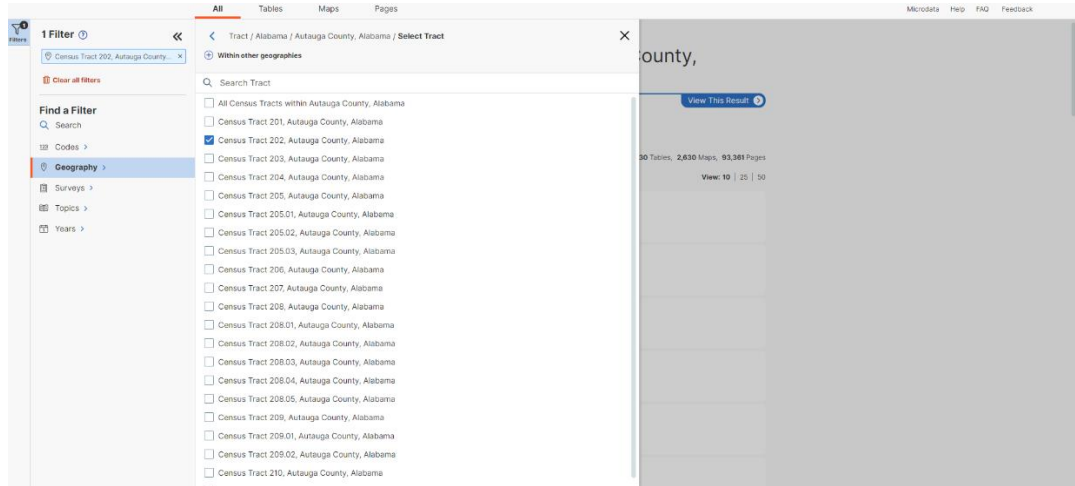
2. Click on the **Geography** tab below **Find a Filter**.



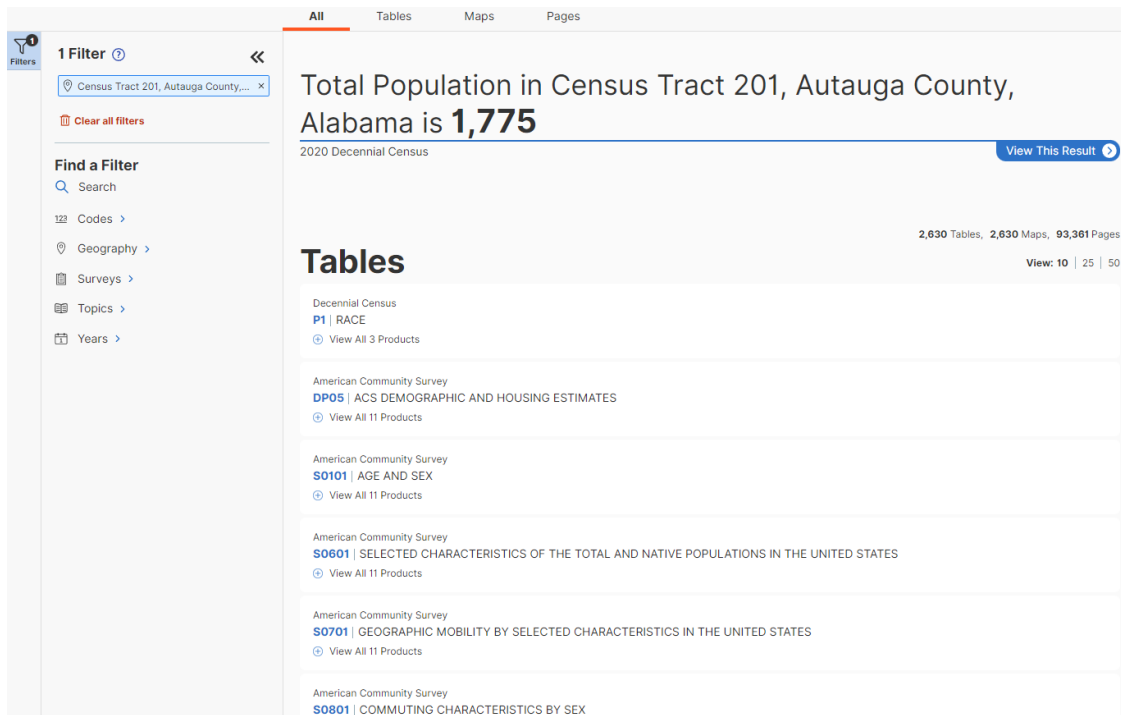
- Under this tab, select **Tract**. Optionally, you can click on other geographies (such as **Blocks**) if you want to select them instead of census tracts.

- To select a particular tract (in this case tract number 201 in Autauga County, AL), click on the state, then the county, and then the census tract that you want. You will see the selected county listed under Filter in the top left corner. Once done, click **Search** in the bottom right corner.

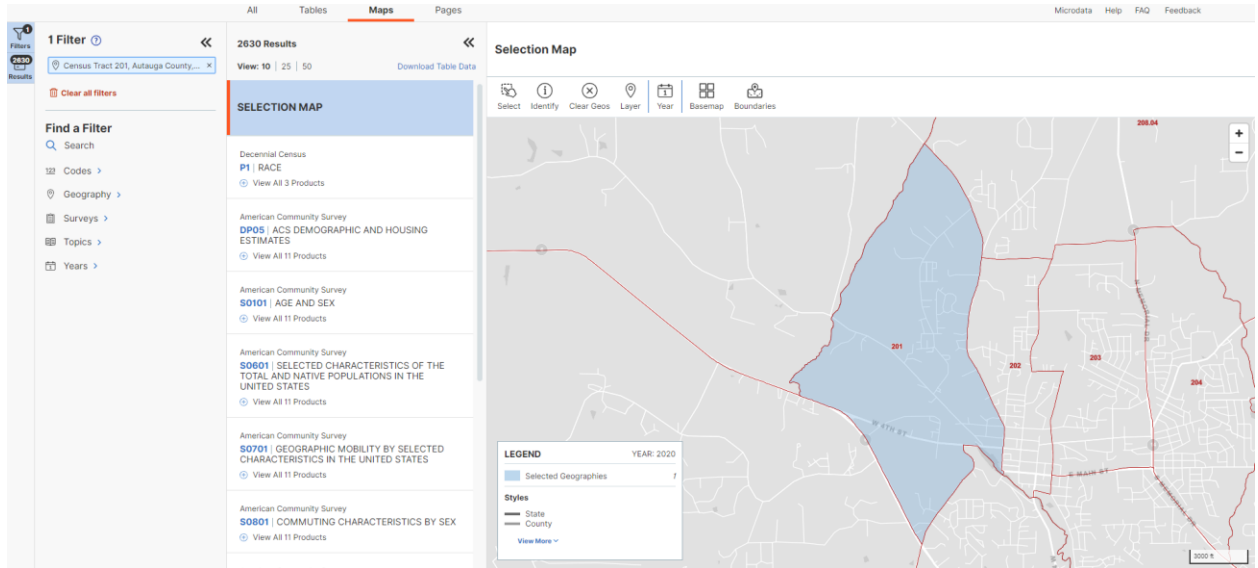
- a. If searching for subsequent census tracts, you will be able to select the relevant census tract without having to select the **Search** button. Once a census tract is selected, you will be able to hit the **X** in the right-hand corner to view the updated page underneath.



5. You will see the census tract's total population and a list of tables on the page as seen below.

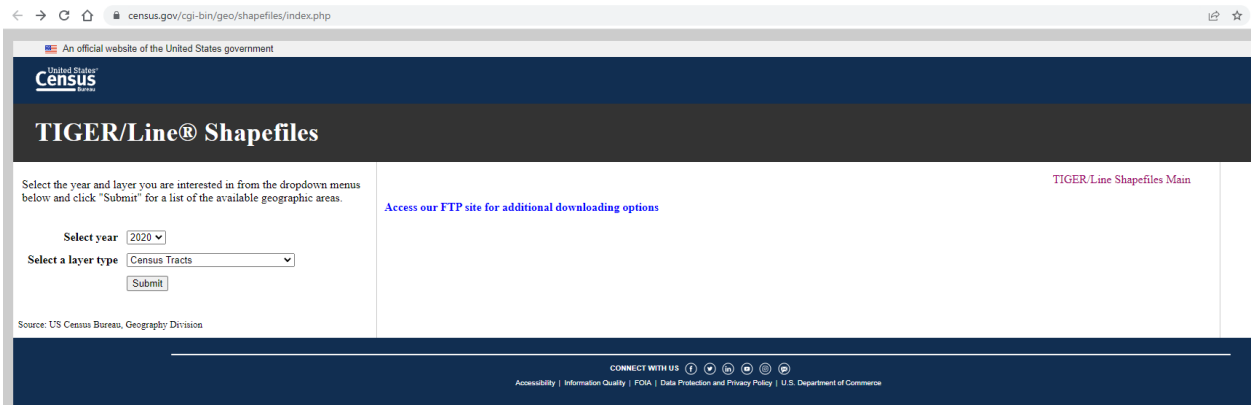


- Click on **Maps** near the top left, and a map of the tract will appear. Note that there currently isn't a way to get the shapefiles for just one specific tract from the census site. For downloading a shapefile of all census tracts in a given state, see instructions on page 5. The **Selection Map** might take a bit of time to load and not zoom in to the right location. If so, try zooming out and zooming into the state where the census tract is. It should be highlighted on the map. The map should look like the image below when zoomed in on the selected tract. You can use your device's print screen functionality to save the map.



II. Getting shapefiles for tracts in a state. This will get the boundaries for all census tracts in a given state. For this guide, we will be using the tracts in Florida, as defined by the 2020 Census.

1. Go to <https://www.census.gov/cgi-bin/geo/shapefiles/index.php>. For the **Select Year** dropdown, make sure that 2020 is the year selected. For “select a layer type” select “census tract”. Then click submit. Optionally, you can click on other geographies (such as “Blocks”) if you want to select them instead of census tracts.



2. Under **Census Tract** and next to **Select a State**, use the dropdown to select the state for your tract of interest. Click **Download** to obtain a zip folder of the files for the state you selected.

